



Apply and Study LLM in the United States: using Washington U. as an example

Peter K. Cramer, Ph.D., M.A. TESOL, LL.M.

Assistant Dean for Graduate Programs

pcramer@wulaw.wustl.edu

and

罗伟 Wei Luo, JD and MLS

Director of Technical Services and Lecturer in Law

Washington University School of Law Library

luo@wulaw.wustl.edu

December 2014



中国法律教育及就业讲座系列
China Legal Education and Career Seminar Series

首页

升学就业

教育讲座

论坛

我们的团队

联系我们

www.clecass.com

CLECSS的全称为China Legal Education and Career Seminar Series
中文是“中国法律教育及就业讲座系列”。

关注我们的微信账号





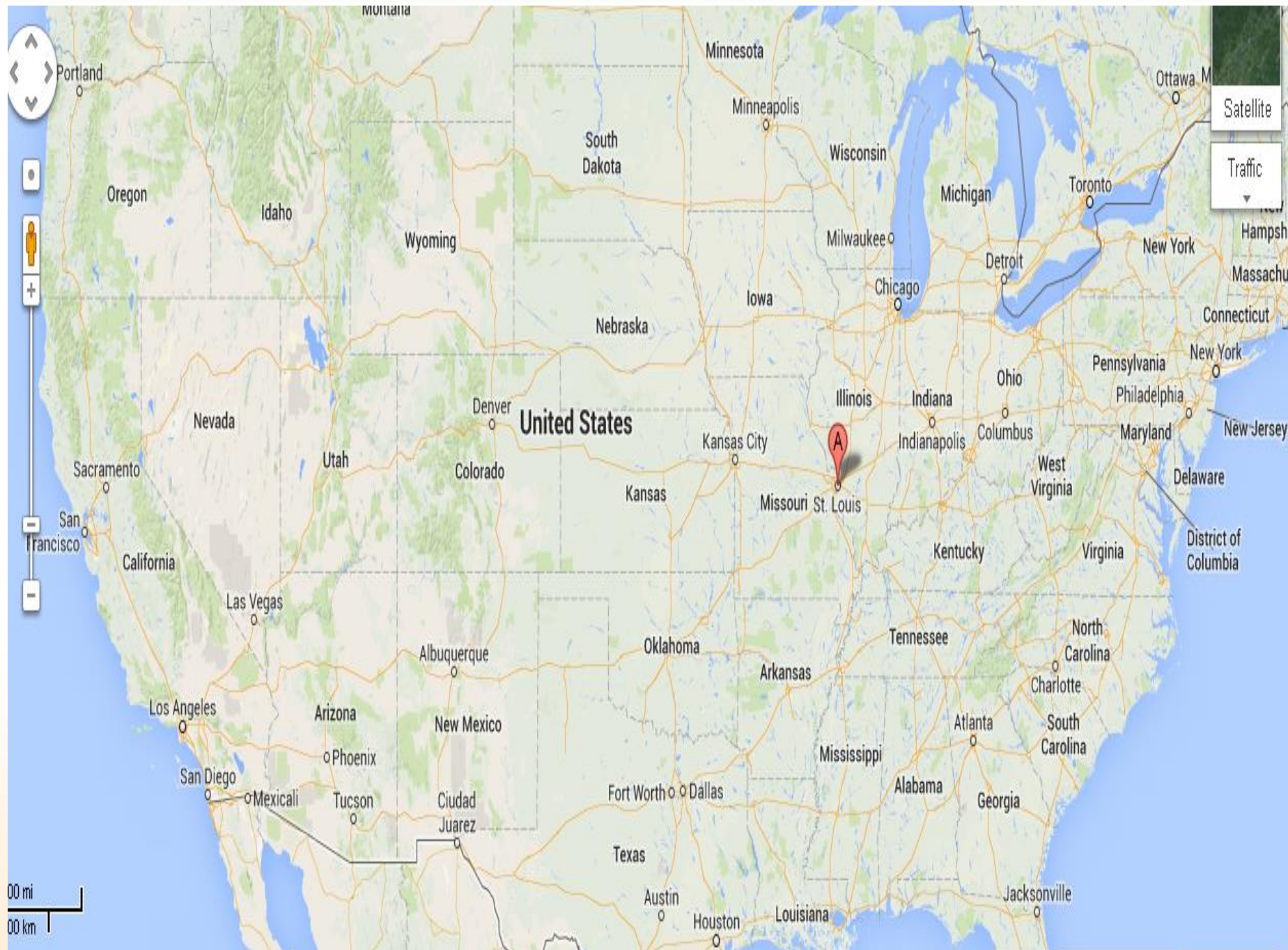
Why Study Law in United States

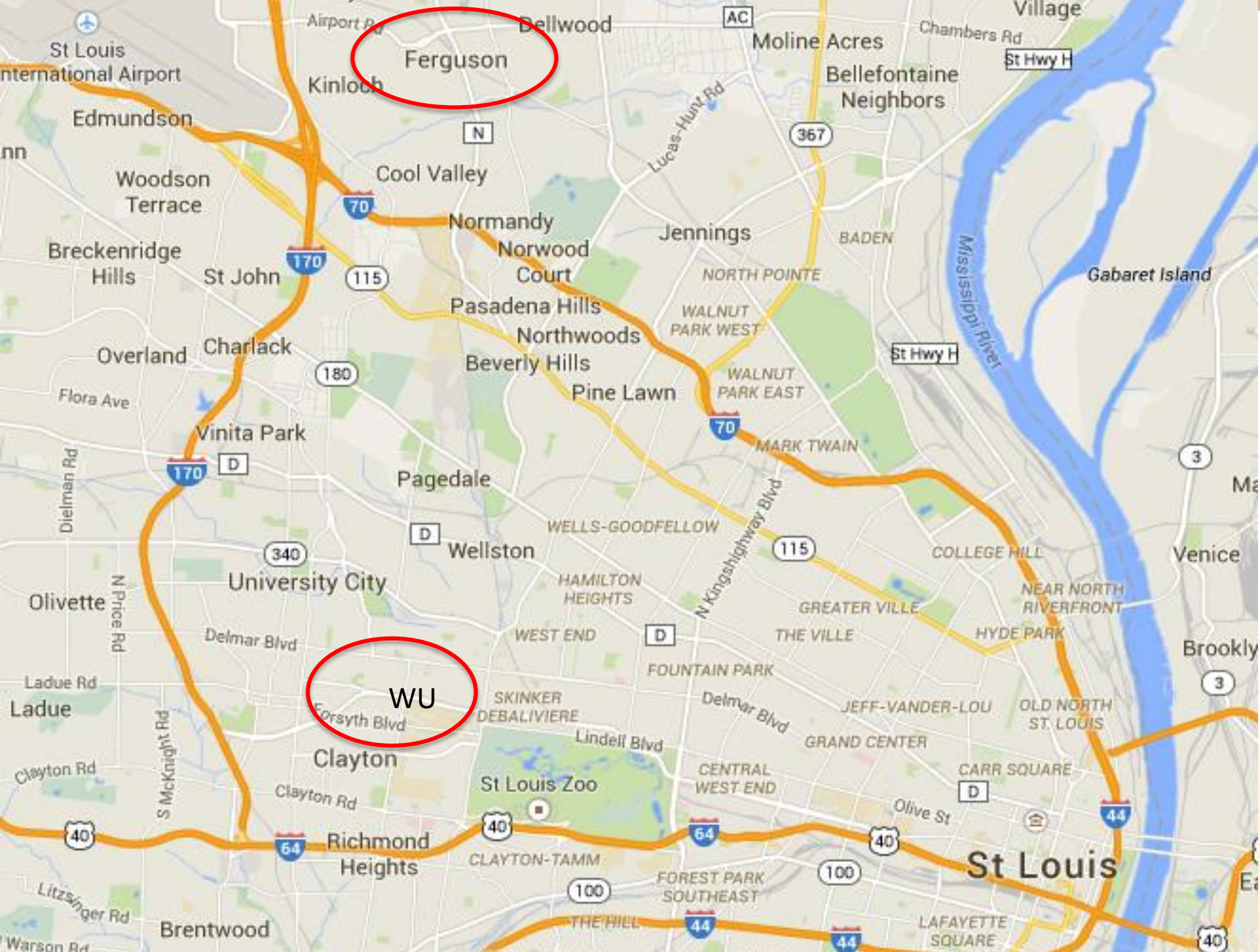
- US has a most advanced legal education system
 - Reasoning 说理
 - Critical thinking 不墨守陈规、思辨
 - Client advocacy 保护和争取客户的权益
 - Cutting edge legal regimes 最前卫的法律体制
- US has the largest economy and the largest export market for China
 - Understanding American business transaction practice
 - Networking with American legal practitioners
 - Getting a license to practice law in the United States

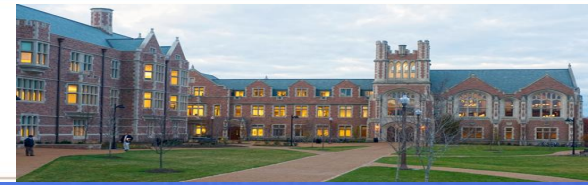


JD v. LLM

- JD: 3-4 years
- 86 credit hours
- First-year courses are very challenging
- Need LSAT Score
- Application process is more complicated
- LLM: 1 year
- 24 credit hours
- Can mix difficult with easier courses
- Don't need LSAT
- Application process is easier
- May transfer to JD















© 2012 Washington University in St. Louis



History and Facts

- Founded in 1867, the Washington University School of Law is the oldest, continuously operating law school west of the Mississippi River.
- Ranked 18 out of 199 schools by the *U.S. News & World Report-Best Law Schools* 2015
- Washington University's students and faculty come from more than 100 countries around the world.



Faculty

Nationally and internationally recognized experts in fields ranging from international law and constitutional law to corporate and other private law fields.



Alumni support

- Washington University Clubs are active in 53 cities around the world.
- Creating mutually beneficial lifelong relationships with Alumni.
- China Law Society



LL.M. in U.S. Law for Foreign Lawyers

- For law students, interested in increasing their knowledge of United States or international law.
- To more effectively practice in today's global legal environment.
- To learn from faculty who are experts in both United States and international law.
- To learn from American law students and from students from diverse legal cultures

LL.M. in U.S. Law for Foreign Lawyers



- Gaining practical and theoretical knowledge of U.S. and international law.
- Developing expertise in a specialized field of law.
- Strengthening your ability to represent clients who have business dealings in the U.S. or with U.S. companies and firms.
- Improving your representation of American clients who conduct business abroad.
- Building an international network of professional contacts.
- Refining your English skills and understanding of American culture.



LL.M. in IP and Tech Law

- For legal professionals who have practiced IP law
- For recent law graduates who specialized in IP law in their country



LL.M. with Specialization in Negotiation and Dispute Resolution

- For legal professionals who have already practiced ADR methods
- For recent law graduates who want to expand on Mediation, Arbitration and other alternative dispute resolution techniques

Practical Experience



- 1. Judicial Experiential Learning Experience**
- 2. Attorney Mentor Program**
- 3. Moot Court Participations**



2-Year LL.M. Program

- Based on Dean Cramer's very successful creation of first 2-year LL.M in U.S.
- Intended for applicants with excellent academic and/or professional record but low English language scores
- Opportunity to join a top-law school LL.M. with TOEFL scores that would prevent admission at other law schools



2-Year LL.M. Program

- First year
 - Summer: 6 week Intensive Legal English class (ELP)
 - 2-Week Orientation together with 1-year LL.M
 - Fall and Spring: Intensive Legal English classes (10 hrs per week) ; Two Content Classes- Introduction to US. Legal Methods; Introduction to ADR
 - together with 1-year LL.M students plus visits to courts and other extracurricular events
- The second year is designed as a regular 1-year LL.M.



Legal English Classes: Online

- Intensive Introduction to Common Law Reasoning, Case Reading, Written Legal Communication
- Taught by Dean Cramer
- New classes every 4 weeks
- Enrollment fee of \$ 2500 will be reimbursed as tuition remission
- Link:
https://washulawllm.adobeconnect.com/_a1158162061/p7zirolnbmo/?launcher=false&fcsContent=true&pbMode=normal



English Class on Campus (ELP Summer program)

- Intensive Introduction to Common Law Reasoning, Case Reading, Written Legal Communication
- 6 weeks (Mid of June- End of July)
- Taught by ESL professionals
- Enrollment fee of \$ 4,900 will be reimbursed as tuition remission
- Link: <http://oiss.wustl.edu/english-language-programs/english-advantage-summer-program/>

Admission Requirements



- U.S. Law LL.M. candidates must have earned or will earn a first law degree (undergraduate or master) from their home jurisdiction.
- TOEFL 90 以上 (Internet-based), a C1 Pass on the ILEC, or a 6 以上 on the IELTS. (The TOEFL code for the law school is 6929-03). **If under, we will interview you or you can come for a summer or online legal English programs**

Admission Requirements



Submit:

- (1) one brief essay;
- (2) application fee waived if apply online; don't use LSAC;
- (3) two recommendation letters;
- (4) official academic transcripts in English with class rank from all schools attended even if no degree awarded;
- (5) indication of English-language proficiency, as described above.



Electives commonly chosen by LL.M. students

- Antitrust
- Arbitration Theory + Practice
- Bankruptcy
- Business Acquisitions
- Civil Procedure
- Contracts
- Copyright & Related Rights
- Corporations
- Criminal Law
- European Union Law
- Evidence
- Financial Literacy & Basic Financial Concepts
- Financial Accounting for Lawyers
- Immigration Law
- International Human Rights Law
- International Business Transactions
- International Law
- Introduction to U.S. & Comparative ADR Processes
- Mediation Theory & Practice
- Negotiation
- Patent Drafting
- Patent Law
- Products Liability
- Torts
- Trademarks & Unfair Competition



Funding

- Tuition
 - \$49,945
 - Tuition Remission



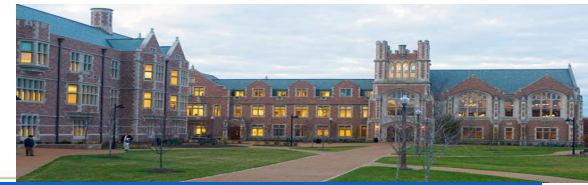
NY Bar Requirements: 24 credit hours

1. Professional Responsibility or Legal Ethics
2. Legal Research, Writing & Analysis
3. American Legal Studies, American Legal System or similar course
4. 6 credits in other courses tested on the NY bar exam
5. 50 hours of Pro-Bono Work (can also be done 1 year before start of LL.M.)

http://www.nycourts.gov/attorneys/probono/Rule520_16.pdf



WU Campus Life









Law
School

Forest Park (near by)



St. Louis Art Museum



St. Louis Downtown and Arch



Urban settings and country living





新世界 新生活 新资讯 从“大拱门”论坛开始 | 面向华大和圣路易斯地区中国留学生社群的交流平台

学联会公告 (Announcements)

[首页](#) [帮助](#) [搜索](#) [日历](#) [登录](#) [注册](#)

大拱门 - 华大中国留学生交流平台 / 华大学联会 / 学联会公告 (Announcements) (版主: Wash.U CSSA)

页: [1](#) [2](#) [向下](#)

标题 / 作者				回复 / 浏览
		CSSA 打折卡商家使用列表 (2013.10更新) 作者 Wash.U CSSA		0 回复 711 浏览
		华大CSSA联系方式 作者 Wash.U CSSA		0 回复 360 浏览
		华大CSSA E-Newsletter 2014 马年新春特辑 作者 Wash.U CSSA		0 回复 27 浏览
		“华大好声音”重磅来袭！歌手招募中！		0 回复

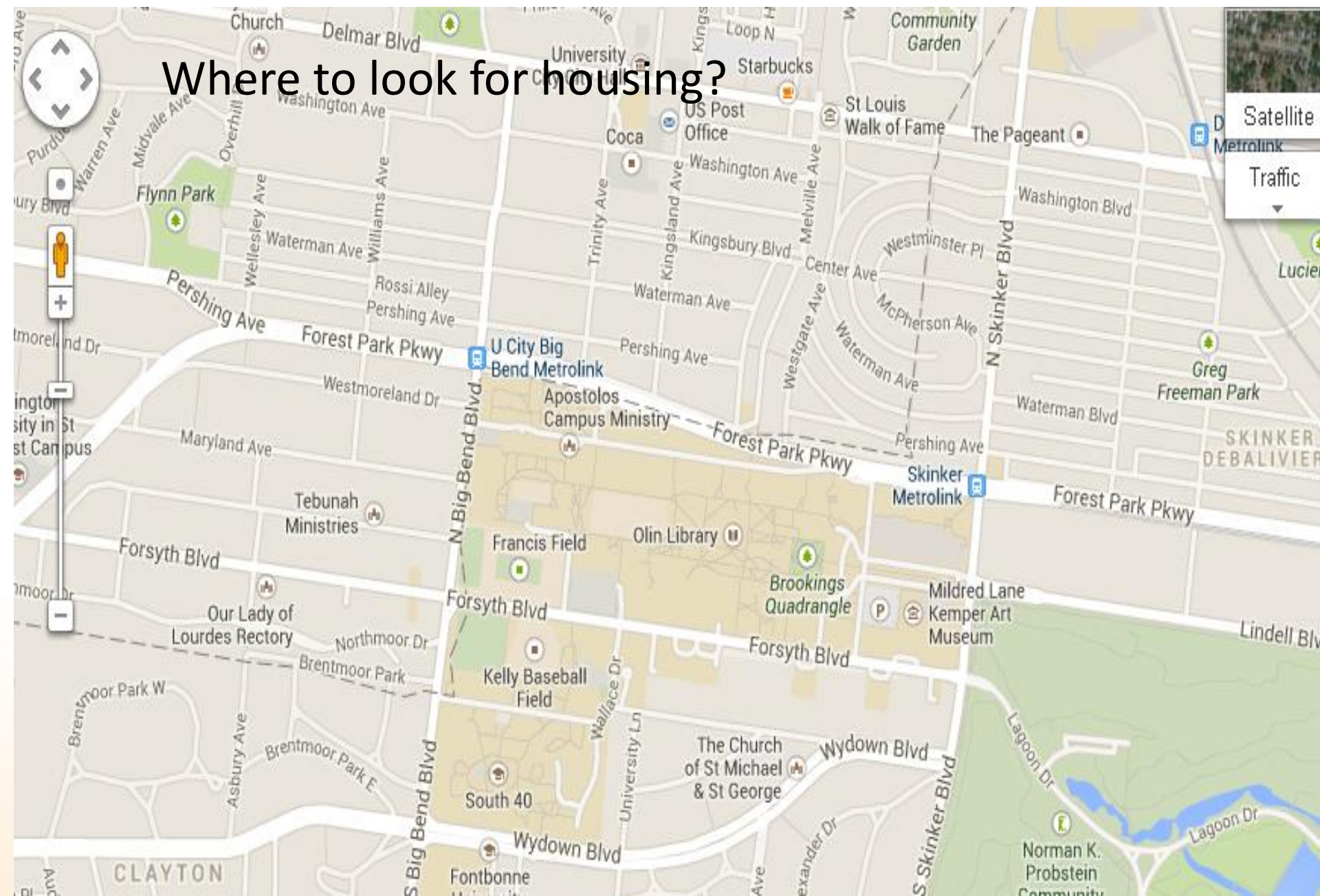
WU near by neighborhoods and housing

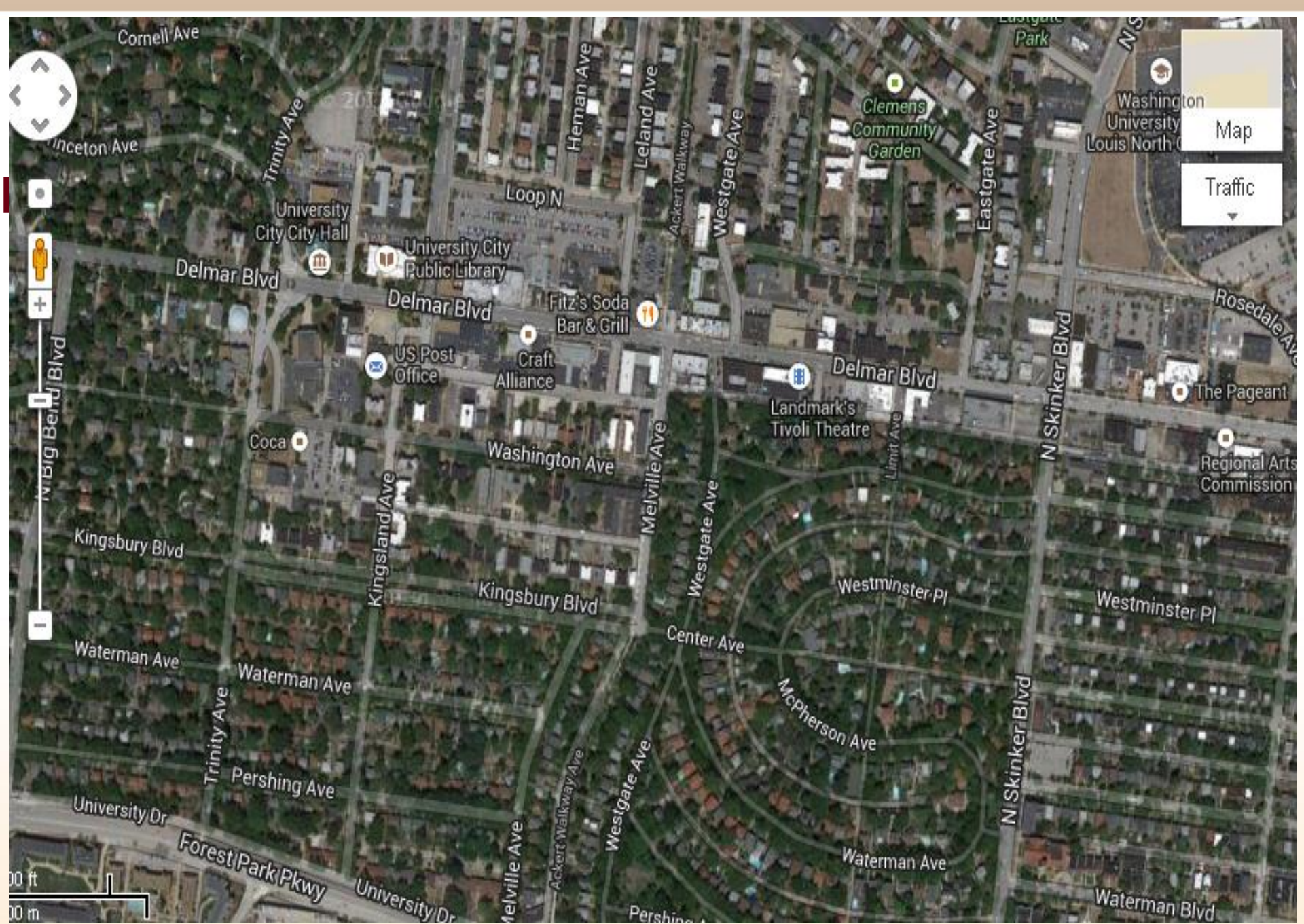




Law
School

Where to look for housing?





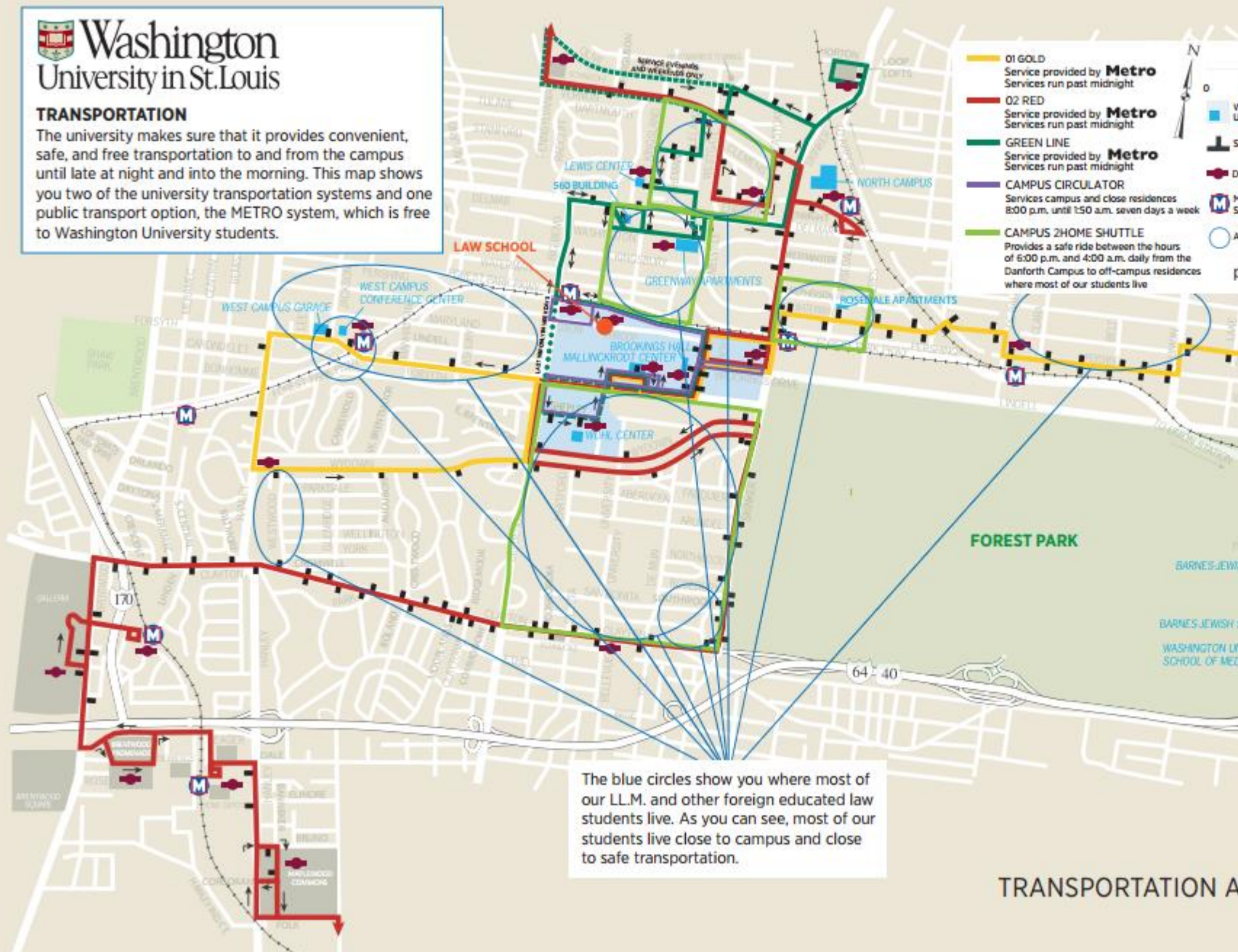
Bus Routes





TRANSPORTATION

The university makes sure that it provides convenient, safe, and free transportation to and from the campus until late at night and into the morning. This map shows you two of the university transportation systems and one public transport option, the METRO system, which is free to Washington University students.



The blue circles show you where most of our LL.M. and other foreign educated law students live. As you can see, most of our students live close to campus and close to safe transportation.



TRANSPORTATION

As you can see, most of our students live close to campus (yellow flag) and close to regular and safe transportation.

The university makes sure that it provides convenient and safe transportation to and from the campus until late at night and into the morning. The map shows you two of the university transportation systems and public transport options:

The Circulator (on campus and close residences 8:00 p.m. until 1:50 a.m. seven days a week <http://parking.wustl.edu/transportation/Documents/campus-circulator-map.pdf>

The Campus 2Home Shuttle (provides a safe ride between the hours of 6 p.m. and 4 a.m. daily from the Danforth Campus to off-campus residences where most of our students live)

Public Transportation Options (buses and metro service- see circulator map) .

<http://parking.wustl.edu/transportation/Documents/campus-circulator-map.pdf>

Campus police also offers escorts throughout the entire Danforth campus. Walking escorts provide service to or from any location on campus, from 8 p.m. to 2 a.m., during the academic year. To request this service, students can call (314) 935-5555.

We need a link to a map that shows those boundaries. Might be our google map.



Study LLM at Washington University School of Law

- 2 weeks orientation to prepare you to rigorous legal education with JD students
- Legal English enhancement
- Introduction to American Law and Legal Methods at WULaw
- Focus on your study



Questions

